

- 1 CREMONA
- 2 CREMA
- 3 SORESINA
- 4 CASALMAGGIORE



Settore Ambiente e Territorio

Piano di Emergenza Sismica del territorio provinciale

Carta "Zone Rosse"

approvato il

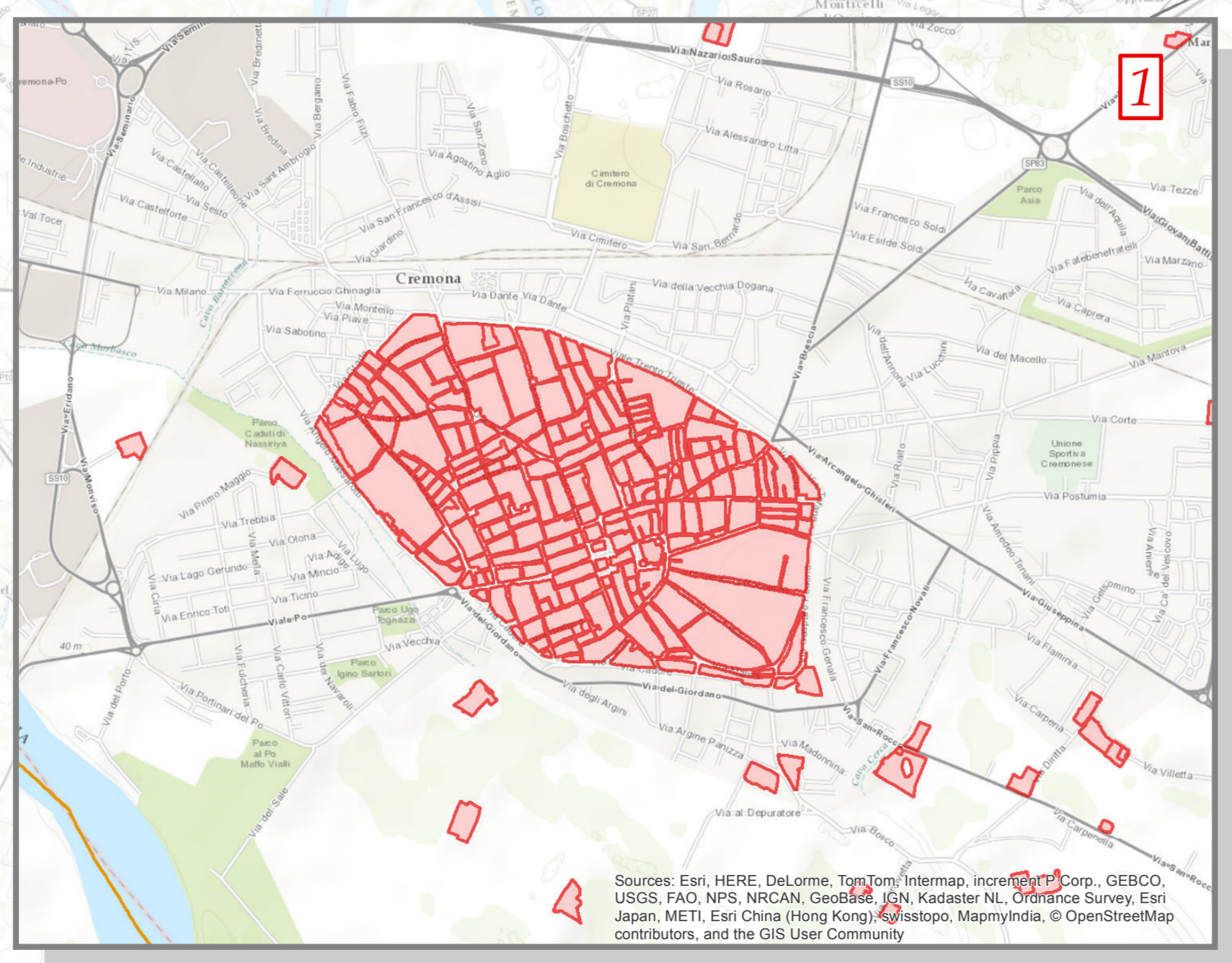
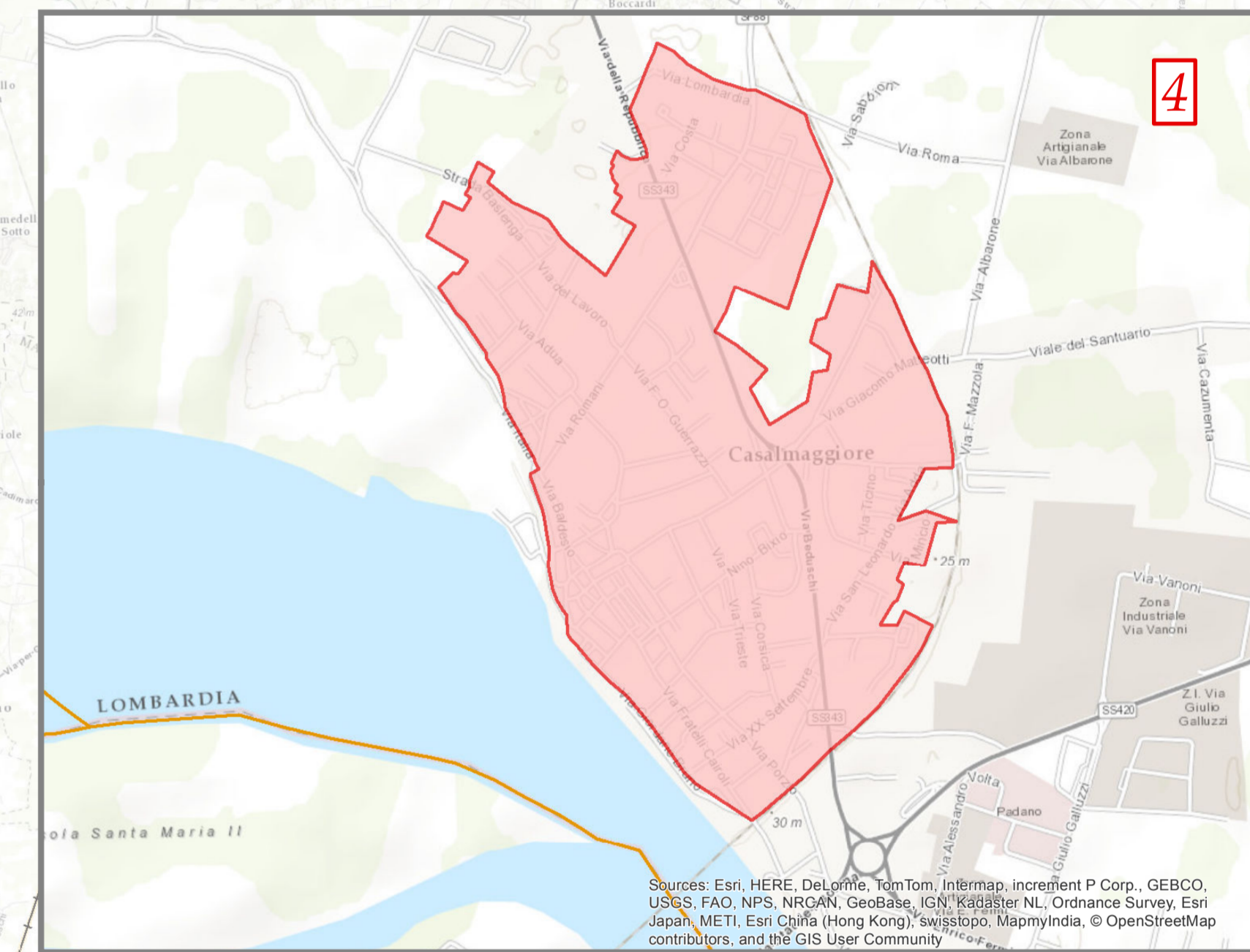
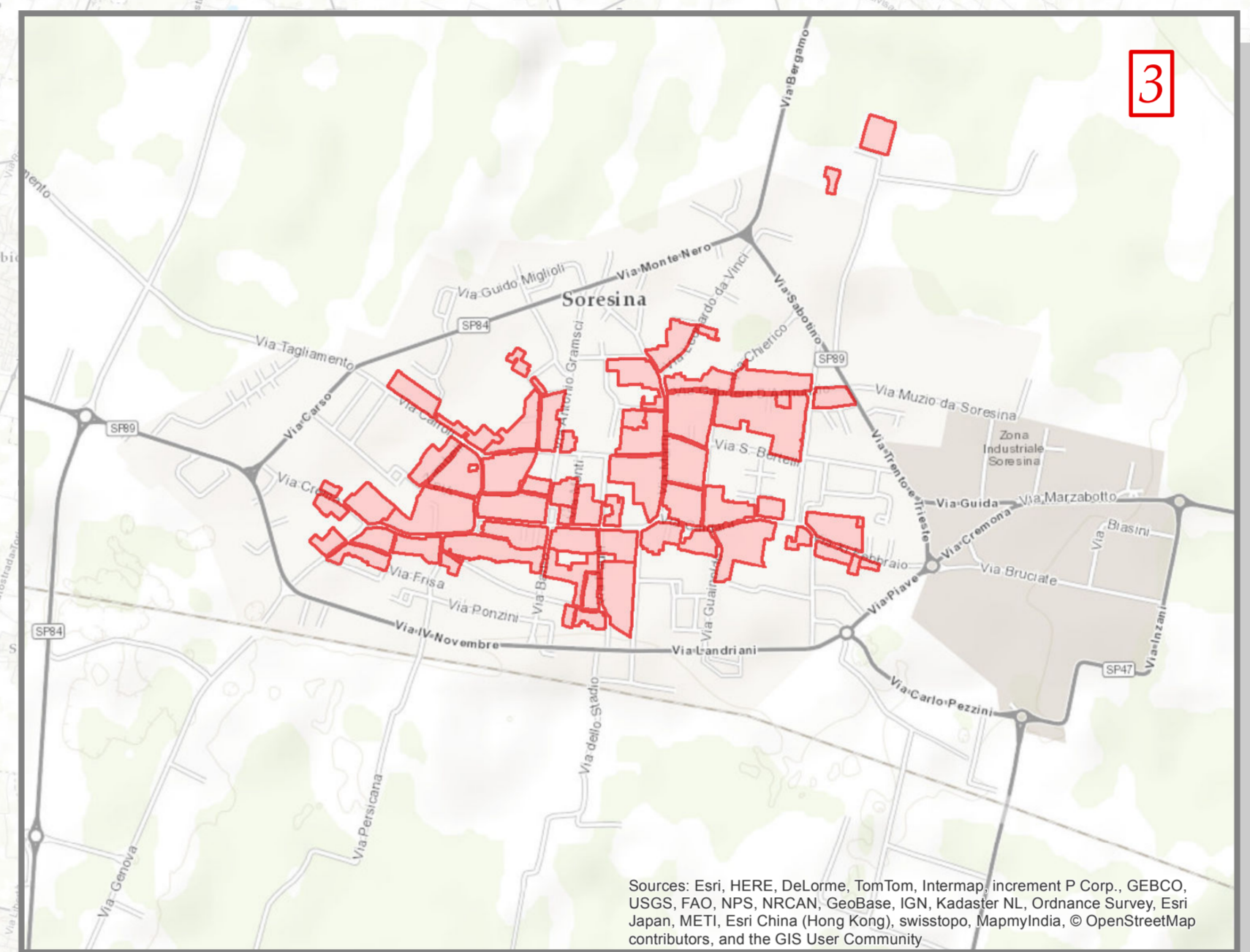
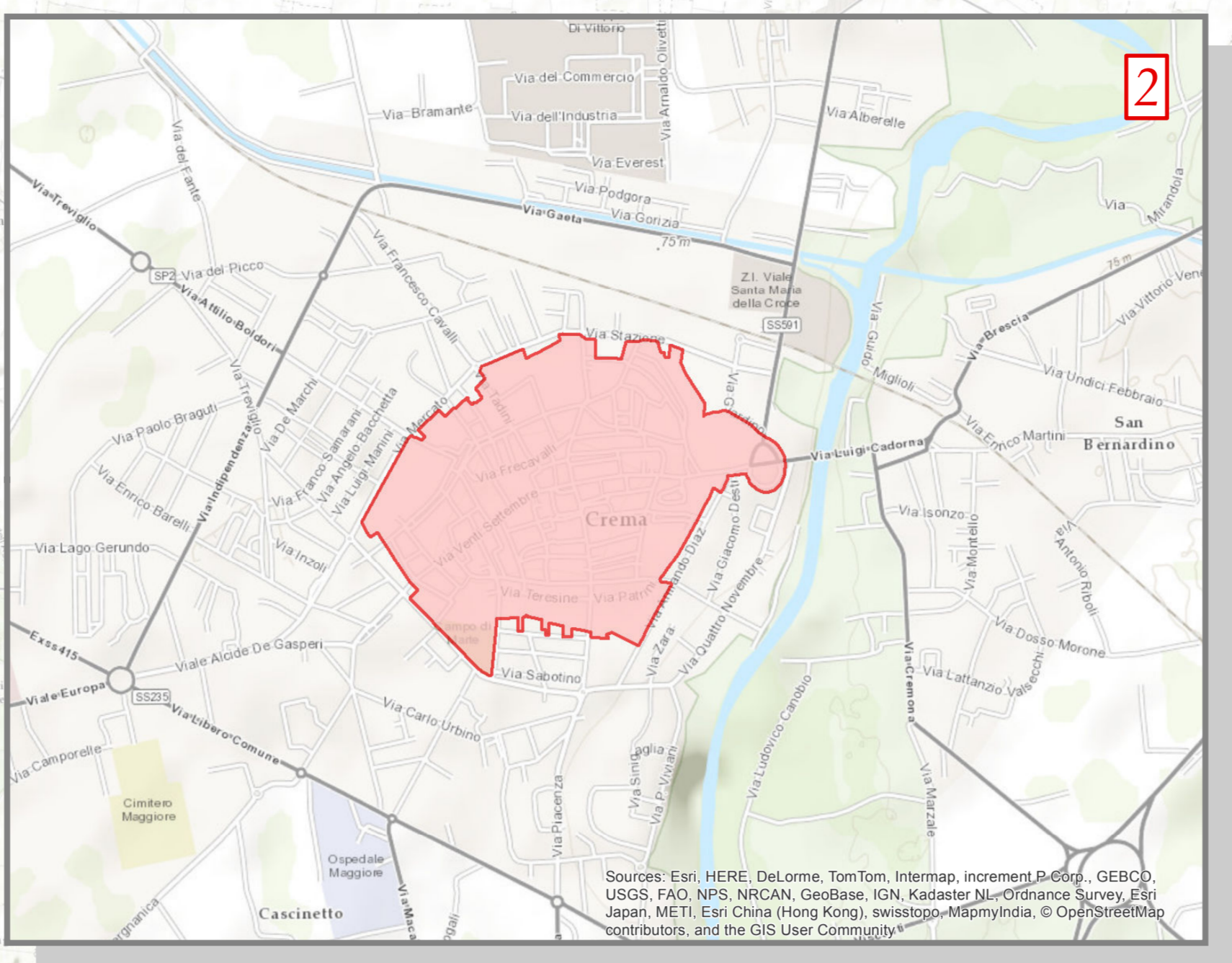


1:80 000



10 ottobre 2016





Source: Esri, HERE, DeLorme, TomTom, Intermap, increment P Corp., GEBCO, USGS, FAO, NPS, NRCAN, Geobase, IGN, Kadaster NL, Ordnance Survey, Esri Japan, METI, Esri China (Hong Kong), Swisstopo, MapmyIndia, © OpenStreetMap contributors, and the GIS User Community